

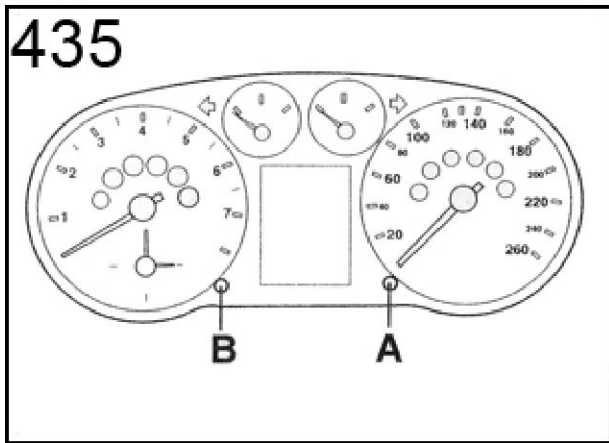
Audi

A3 96-99 A4 98-99

Oil - Oil service Press and hold button A fig 435 Switch ignition on The word OIL will display in the trip recorder display Release button A pull out button B for about 2 sec to reset the display

INSP - Inspection service

Press and hold button A fig 435 Switch ignition on The word OIL will display in the trip recorder display Release button A press and release button A the word INSP will appear in the trip recorder display pull out button B for about 2 sec to reset the display



A3 2000 ----> A4 2000-01

Cars on longlife service cannot be reset

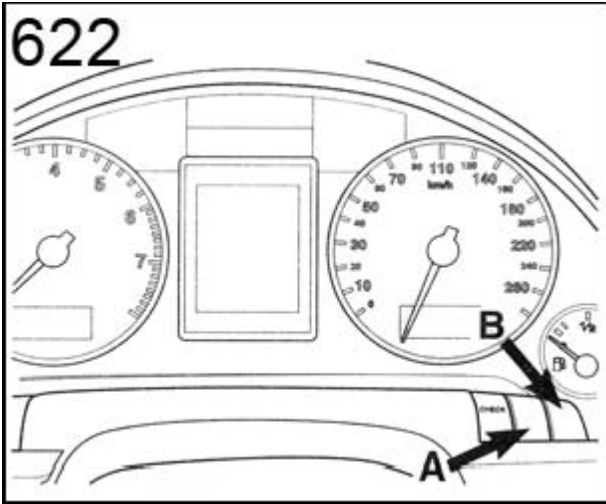
Cars with fixed interval servicing can be reset:

Press & hold button A fig 435 Switch ignition on Release button A The words SERVICE or SERVICE IN XXXXMI will appear in the trip recorder display Turn button B to the left to clear the display Turn ignition off

A4 2001---->

Cars on longlife service cannot be reset

Press & hold button A fig 622 Switch ignition on Release button A The words SERVICE or SERVICE IN XXXXMI will appear in the trip recorder display Press button B until display clears and is replaced with new service interval

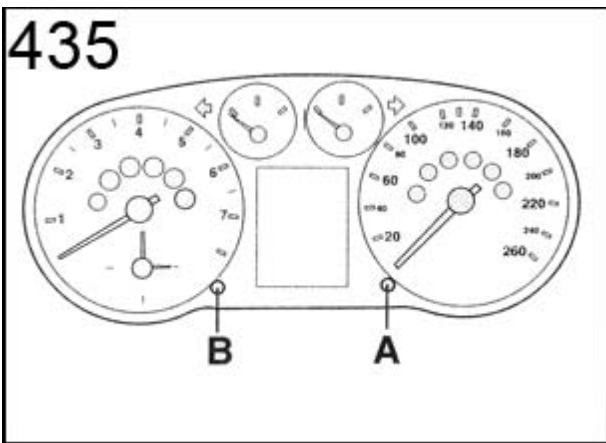


A6 97-99

OEL - Oil service

press and hold button A fig 435 Switch ignition on Release button A The letters OEL or OIL will display Pull out button B until letters are erased and replaced by - - -

INSP - Inspection service press and hold button A fig 84764 Switch ignition on Release button A Press & release button A The letters INSP will appear Pull out button B until display clears and is replaced with new service interval



A2 2000---> A6 2000--->

Cars on longlife service cannot be reset

press and hold button A fig 435 Switch ignition on The words SERVICE or SERVICE IN XXXXMI will appear in the trip recorder display Release button A Press button B to reset

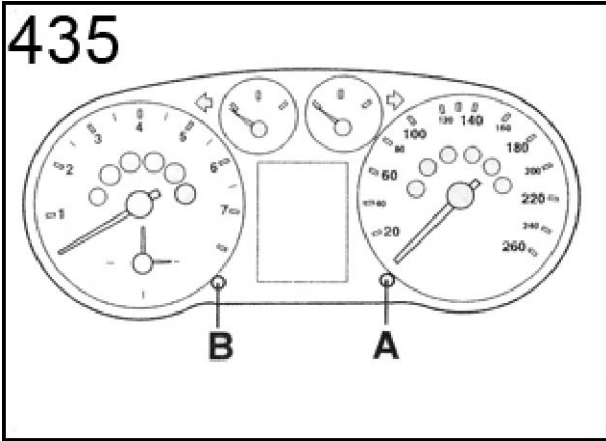
TT 1998-99

press and hold button A fig 435 Switch ignition on The words SERVICE or SERVICE IN XXXXMI will appear in the trip recorder display Release button A Turn button B to the right to reset

TT 2000--->

Cars on longlife service cannot be reset

press and hold button A fig 435 Switch ignition on Release button A The words SERVICE or SERVICE IN XXXXMI will appear in the trip recorder display Turn button B to the left to clear display



[Back](#)

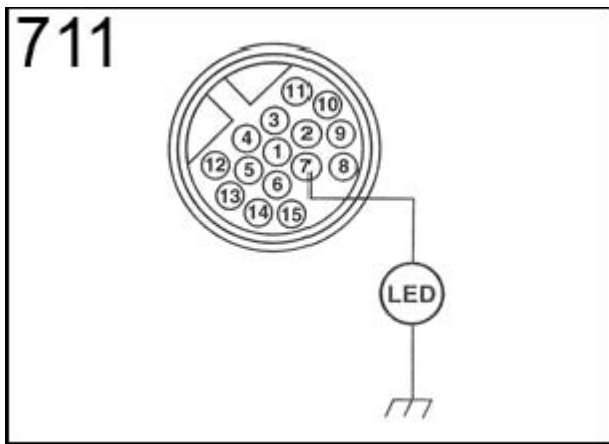
BMW

3 Series E30 1982-85 5 Series E28 1982-88

Oil service LED

Connect a test lamp (or just wire) between terminal 7 of the diagnostic connector and earth it fig 711 The diagnostic connector is located to left or right turret (support) or on bulkhead. Switch ignition ON After 3 sec 5 green LED will show Switch off ignition

Inspection service LED Connect a test lamp (or just wire) between terminal 7 of the diagnostic connector and earth it fig 711 The diagnostic connector is located to left or right turret (support) or on bulkhead. Switch ignition ON After 12 sec 5 green LED will show Switch off ignition



3 Series E30 1986-94 3 Series E36 1990-01 3 Series E46 1998----> 5 Series E34 1988-96 5 Series E39 1996----> 7 Series E38 1994----> Z3 E36 1996---->Z8 E52 1999---->X5 E53 1999---->WITH UNDERBONNET DIAGNOSTIC CONNECTOR

Oil service LED

Switch ignition on

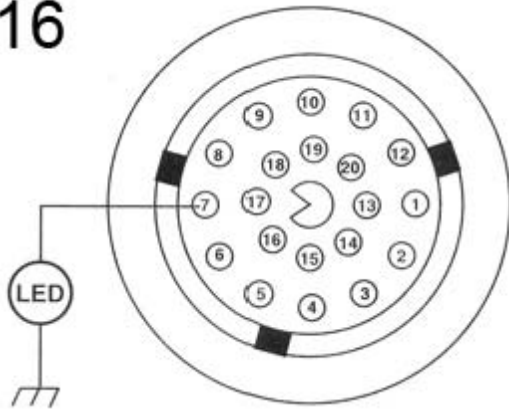
Connect a test lamp (or just wire) between terminal 7 of the diagnostic connector and earth it fig 84765 The diagnostic connector is located to left or right turret (support) or on bulkhead. After 3 sec 5 green LED will show Switch ignition off

Inspection service LED

Switch ignition on Connect a test lamp (or just wire) between terminal 7 of the diagnostic connector and earth it fig 416 The diagnostic connector is located to left or right turret (support) or on bulkhead. After 12 sec 5 green LED will show Switch ignition off

Inspection service LED together with clock symbol Switch ignition on Connect a test lamp (or just wire) between terminal 7 of the diagnostic connector and earth it fig 416 The diagnostic connector is located to left or right turret (support) or on bulkhead. After 12 sec 5 green LED will show Switch ignition off Wait 20 sec Connect a test lamp (or just wire) between terminal 7 of the diagnostic connector and earth it fig 416

416



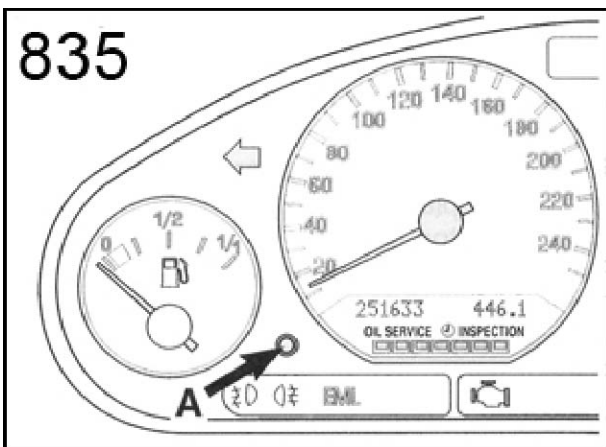
3 Series E46 2000---> 5 Series E39 2000---> X5 E53 2000--->WITHOUT UNDERBONNET DIAGNOSTIC CONNECTOR

Reseting service interval indicator on a distance based inspection

Switch ignition OFF Press and hold button A fig 835 Switch ignition ON After 5 sec the words OIL SERVICE or INSPECTION are shown with the message reset. Continue to hold button A After a further 5 sec the message starts to flash Release button A Press & release button A

Reseting service interval indicator on a time based inspection

If carried out in conjunction with distance based service Switch ignition OFF Press and hold button A fig 835 Switch ignition ON After 5 sec the words OIL SERVICE or INSPECTION are shown with the message reset. Continue to hold button A After a further 5 sec the message starts to flash Release button A Press & release button A again New service interval is now displayed. Press and hold button A for 5 sec The time based inspection is now displayed together with the message RESET Continue to hold button A After a further 5 sec the message reset starts to flash Release button A Press & release button A again.

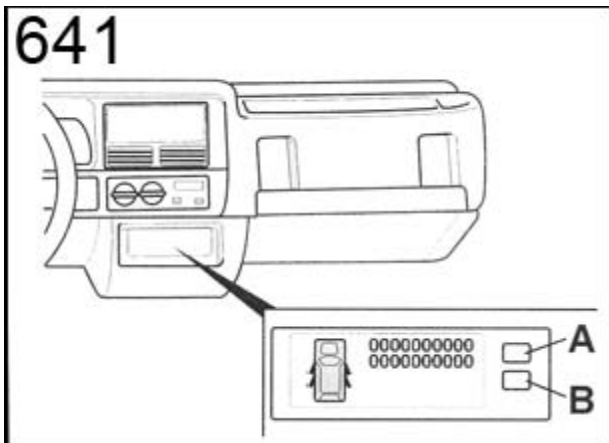


[Back](#)

Chrysler

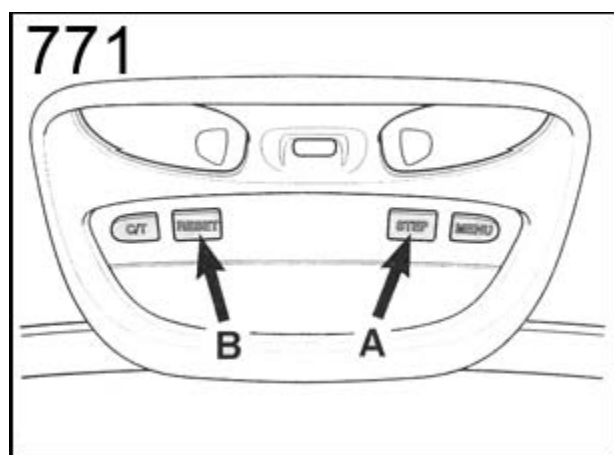
Grand Cherokee 1993-99

Switch ignition on Press & release button B fig. 641 press & hold button A for at least 2 sec Switch ignition off



Grand Cherokee 1999--->

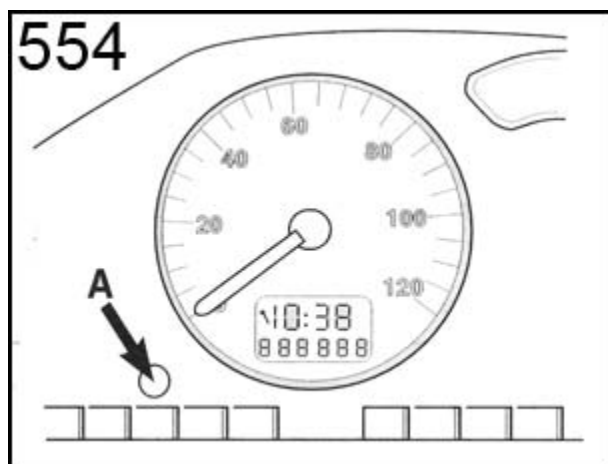
Switch ignition on Repeatedly press button A fig. 771 until the service interval is displayed Press button B for 3 sec to reset



Citroen

Saxo 1999--->

Switch ignition OFF Press and hold button A fig. 554 Switch ignition ON Keep button A depressed for 10 sec Display will now read 0 and spanner symbol will go out.



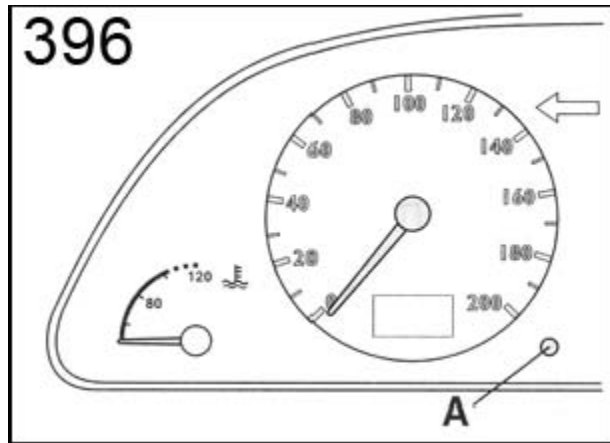
Xsara 1997-00

Press and hold button A fig 396 Switch ignition ON Keep button A depressed Spanner symbol & service interval will light up for 5 sec Switch ignition OFF

Xsara 2000--->

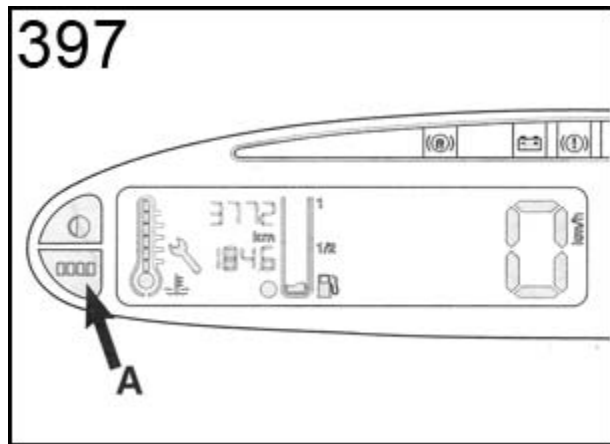
Switch ignition OFF Press and hold button A fig.396 Switch ignition ON Keep button A depressed for 10 sec Display will now read 0

and spanner symbol will go out.



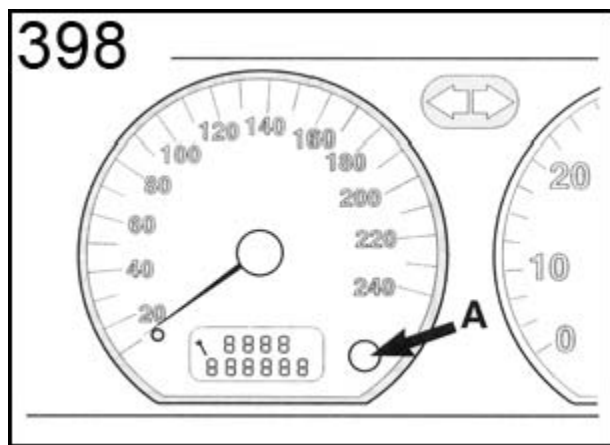
Xsara Picasso 1999--->

Switch ignition OFF Press and hold button A fig.397 Switch ignition ON Keep button A depressed for 10 sec Display will now read 0 and spanner symbol will go out.



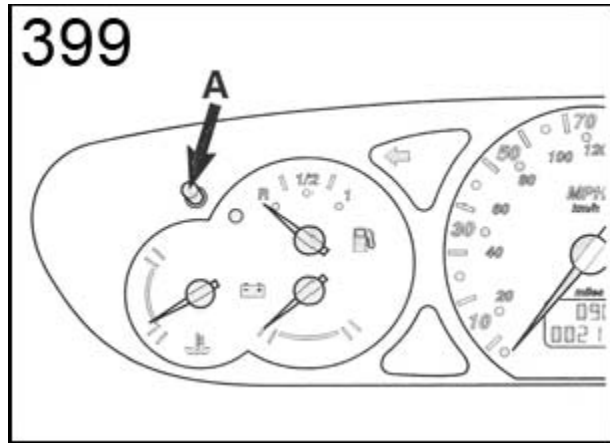
Xantia 1997-00

Press and hold button A fig 398 Switch ignition ON Keep button A depressed Spanner symbol & service interval will light up for 5 sec Switch ignition OFF



C5 2000--->

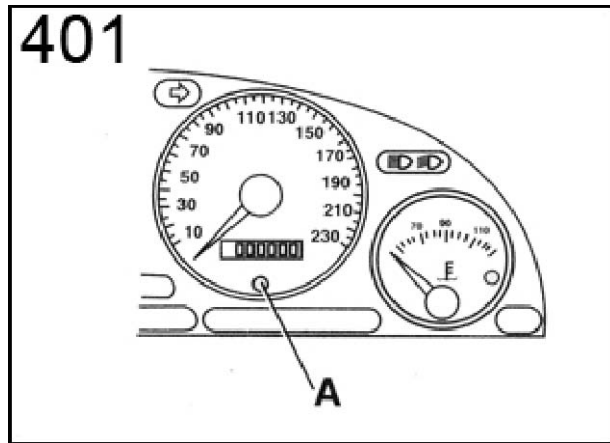
Switch ignition OFF Press and hold button A fig.399 Switch ignition ON Keep button A depressed for 10 sec Display will now read 0 and spanner symbol will go out. Switch ignition OFF



Synergie/Evasion 1999--->

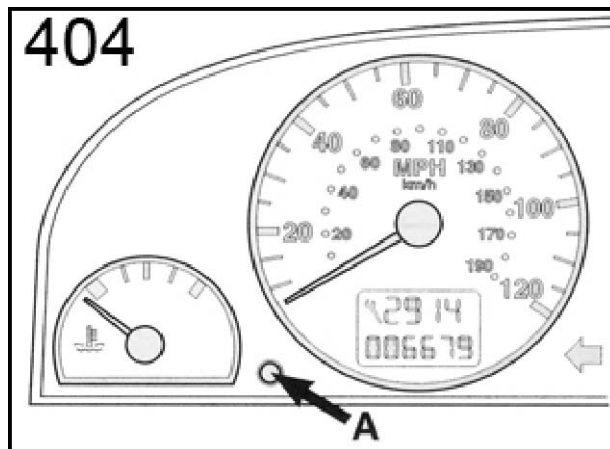
Dispatch/Jumpy 1999--->

Switch ignition OFF Press and hold button A fig.401 Switch ignition ON Keep button A depressed for 10 sec Display will now read 0 and spanner symbol will go out. Switch ignition OFF



Berlingo 1999--->

Switch ignition OFF Press and hold button A fig.404 Switch ignition ON Keep button A depressed for 10 sec Display will now read 0 and spanner symbol will go out. Switch ignition OFF



[Back](#)

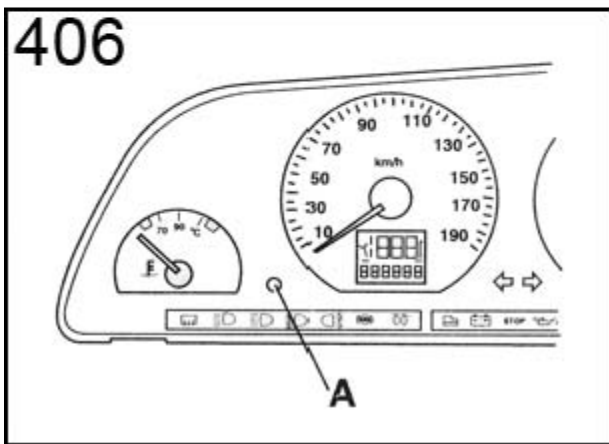
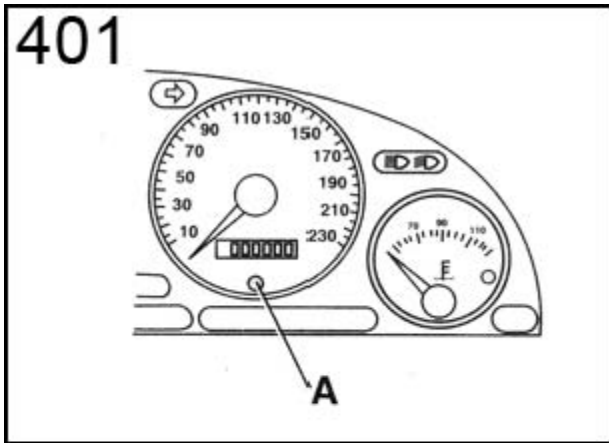
Fait

Ulysse 1999--->

Switch ignition off press and hold button A fig 401 switch ignition on keep button A depressed for 10 sec display will read 0 and spanner symbol will go out

Scudo 1999---

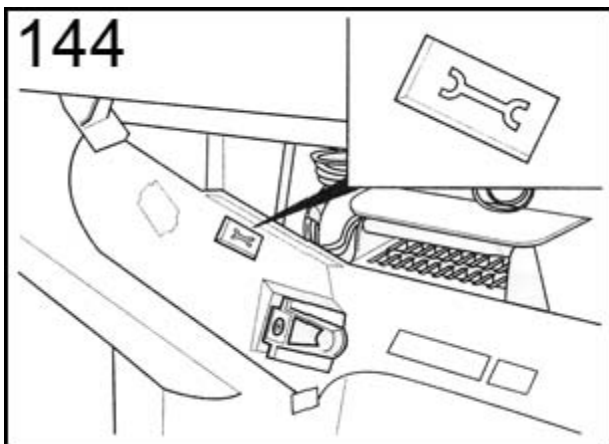
Switch ignition off press and hold button A fig 401 (RHD) or fig 406 (LHD) switch ignition on keep button A depressed for 10 sec display will read 0 and spanner symbol will go out



Ford

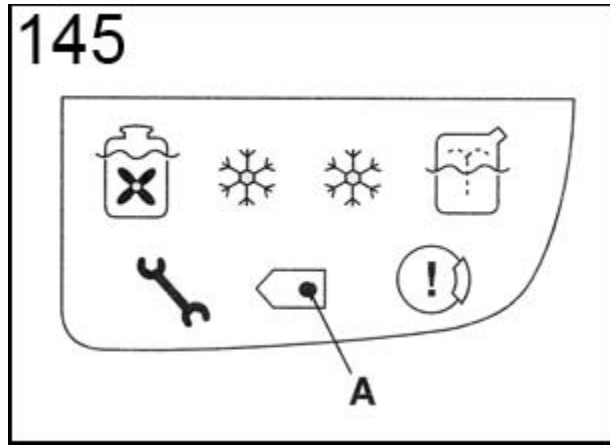
Mondeo 1994-96

Remove glove box Switch ignition ON Press reset button for 4 sec fig 144 Button is located to one side glove box aperture



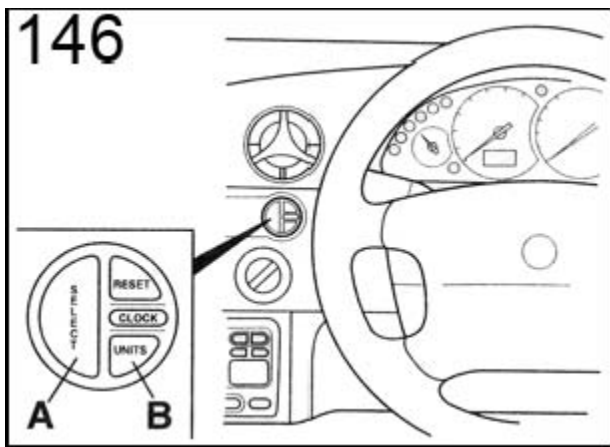
Mondeo 1996-00

Switch ignition ON Using a small object depress button A fig 145 for approx 4 sec



Cougar 1998---

Switch ignition ON Press & hold button A & B fig 146 for approx 5 sec Warning lamp will light for approx 4 sec

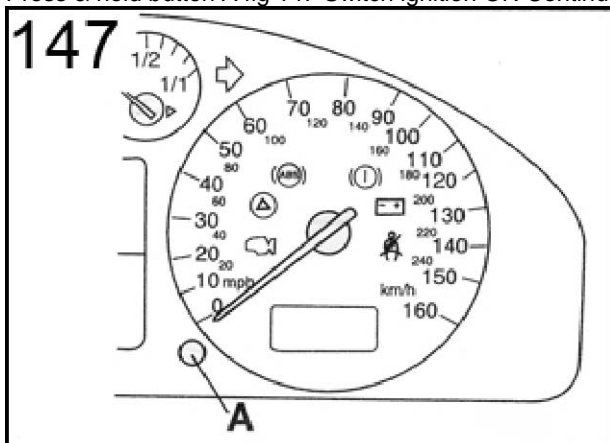


Galaxy 2000

Switch ignition ON Press & hold button A fig 147 for 2 sec which will clear the service interval indicator Press button A & switch ignition off

Galaxy 2000---

Press & hold button A fig 147 Switch ignition ON Continue to hold button A until the word service is erased Switch ignition off



Transit 2000---

Turn ignition key to position II Press the brake & accelerator pedals together for 15 sec Service interval indicator will flash when reset complete Release pedals and turn ignition off

Honda

Accord 1998-01

To reset MAINT REQ'D light, press and hold the select/reset button on the right side of the instrument panel. Turn the ignition on and hold until the light goes out.

SORRY NO IMAGE

Honda Integra 1994-00

To reset "MAINT REQD" light, press the reset switch located to the right of the steering column under the dash.

[Back](#)

Landrover

Discovery Prior to 1996

This is one way we reset the service engine light, prior to 96 model. The kick panel in the passengers side must be removed, the one on the right side. Here you will find a red box, that looks like a large relay box (has Emission Maintenance Reminder on it). behind the label there is a hole that will reset the light. Press in with small object.

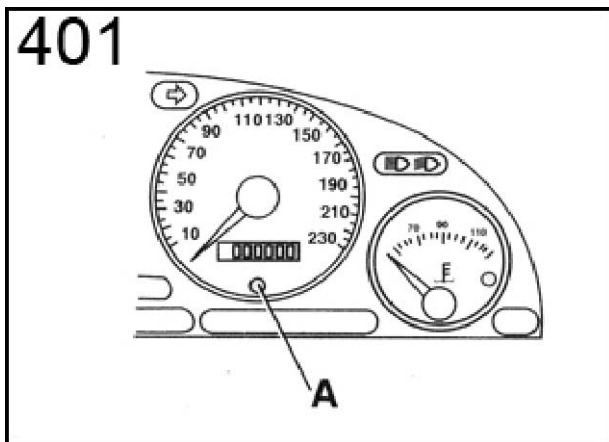
SORRY NO IMAGE

[Back](#)

Lancia

Zeta 1999--->

Switch ignition off Press and hold button A fig 401 Switch ignition on keep button A depressed for 10 sec Display will read 0 and spanner symbol will go out [Back](#)

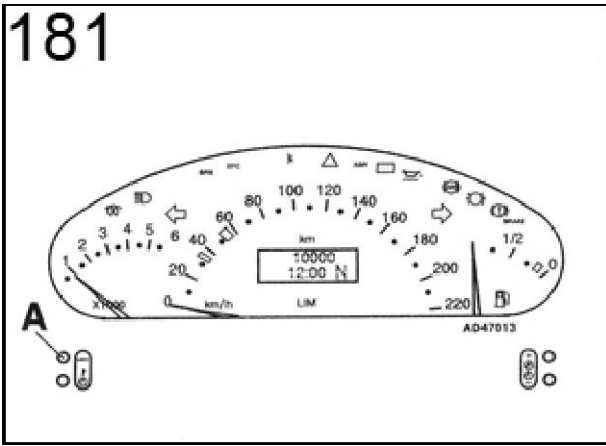


Mercedes Benz

A Class (168)

Switch ignition on and immediately press button A twice fig 181 Switch ignition off Press & hold button A while switching ignition on After 10 sec the new interval will appear in the display accompanied by a beep Release button A Switch ignition off

181

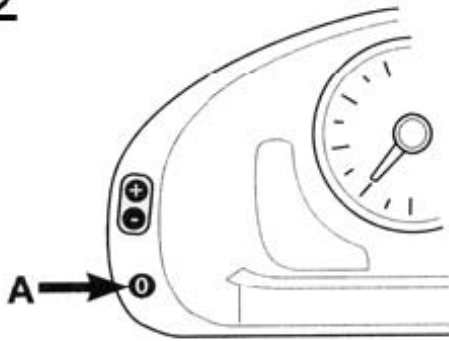


C Class (202) E Class (210) S Class (140) CLK (208)

Excluding models with multifunction steering wheel controls

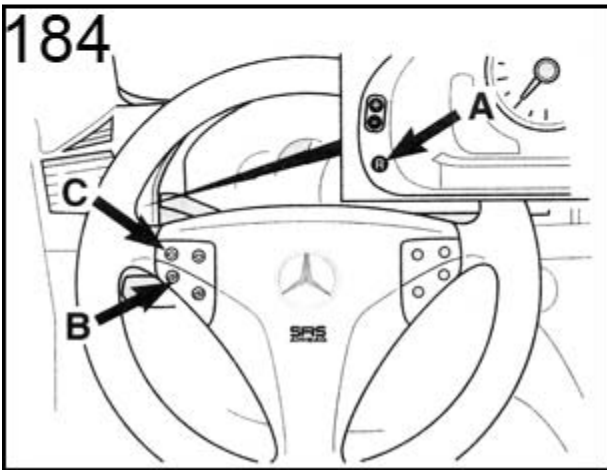
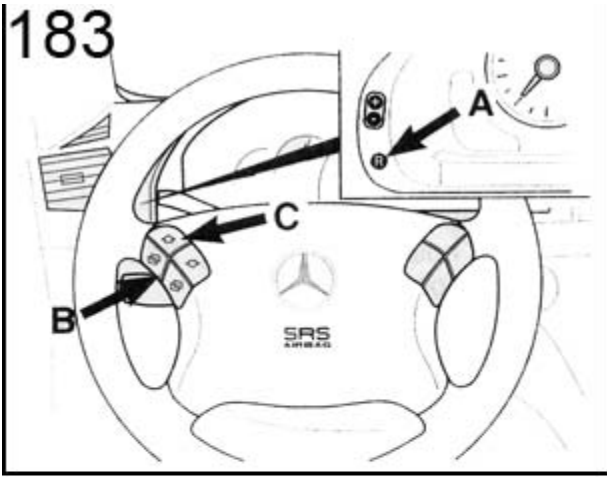
Switch ignition on and immediately press button A twice fig 182 Switch ignition off Press & hold button A while switching ignition on After 10 sec the new interval will appear in the display accompanied by a beep Release button A Switch ignition off

182



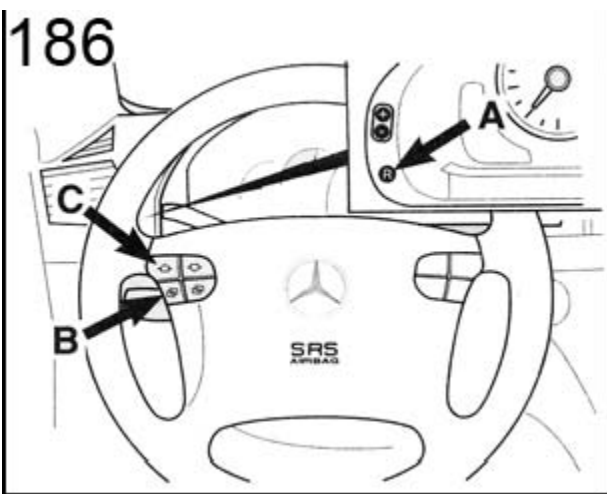
C Class (203)

Turn ignition key to position II Repeatedly press button B fig 183 or fig 184 until both the total & trip mileages appear in the odometer display Repeatedly press button C until the service symbol & distance remaining to next service appear Press button A for 3 sec until the message DO YOU WANT TO RESET THE SERVICE INTERVAL? CONFIRM BY PRESSING R BUTTON appears Within 5 sec press button A until the new service interval appears Release button A Switch ignition off



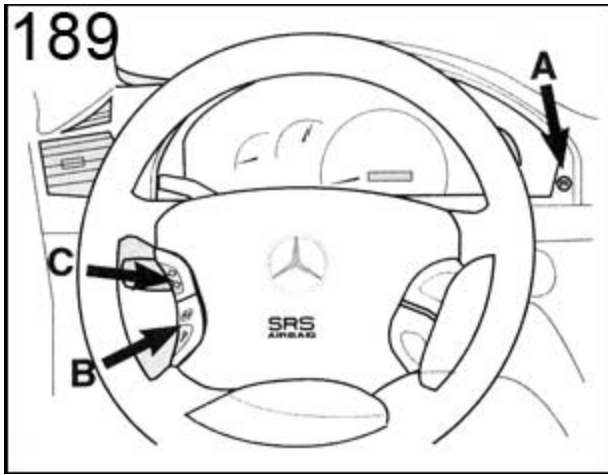
E Class (210)CLK (208)

Models with multifunction steering wheel controls Turn ignition key to position II Repeatedly press button B fig 186 until both the total & trip mileages appear in the odometer display Repeatedly press button C until the service symbol & distance remaining to next service appear Press button A for 3 sec until the message DO YOU WANT TO RESET THE SERVICE INTERVAL? CONFIRM BY PRESSING R BUTTON appears Within 5 sec press button A until the new service interval appears Release button A Switch ignition off



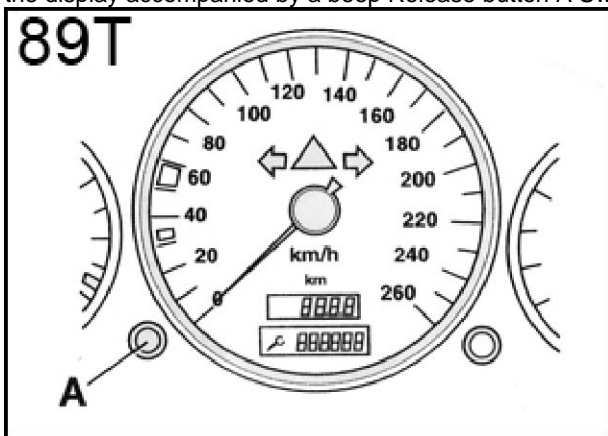
S Class (220)CL (215)

Turn ignition key to position II Repeatedly press button B fig 189 until both the total & trip mileages appear in the odometer display Repeatedly press button C until the service symbol & distance remaining to next service appear Press button A for 3 sec until the message DO YOU WANT TO RESET THE SERVICE INTERVAL? CONFIRM BY PRESSING R BUTTON appears Within 5 sec press button A until the new service interval appears Release button A Switch ignition off



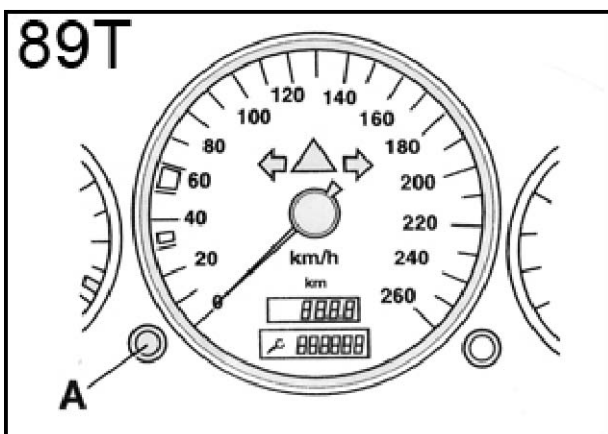
SLK (170) ---->05.1997

Turn ignition key to position one Press & hold button A fig 89T Switch ignition on After 10 sec the new service interval will appear in the display accompanied by a beep Release button A Switch ignition off



SLK (170) 06.1997----> SL (129)M Class (163)V Class (638)Vito (638)Sprinter (901/2/3/4/5)

Switch ignition on and immediately press button A fig 89T Switch ignition off Press & hold button A while switching ignition on After 10 sec the new interval will appear in the display accompanied by a beep Release button A Switch ignition off

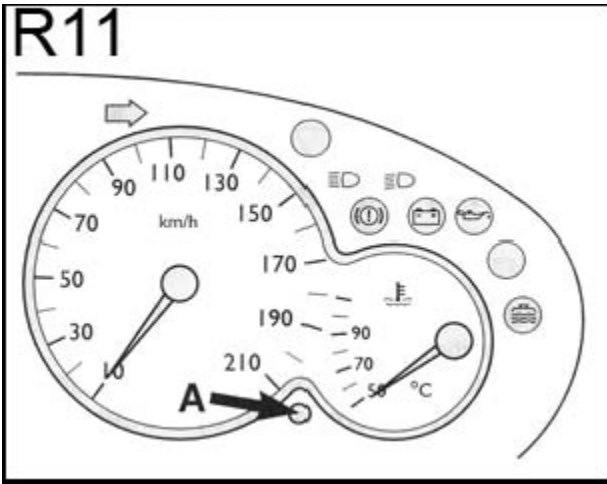


[Back](#)

Peugeot

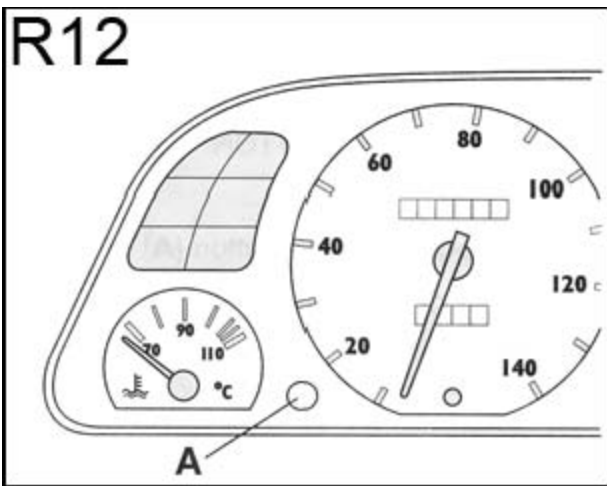
206 1998---->

Switch ignition off Press and hold button A fig R11 Switch ignition on Keep button A depressed for 10 sec Display will now read 0 & spanner symbol will go out



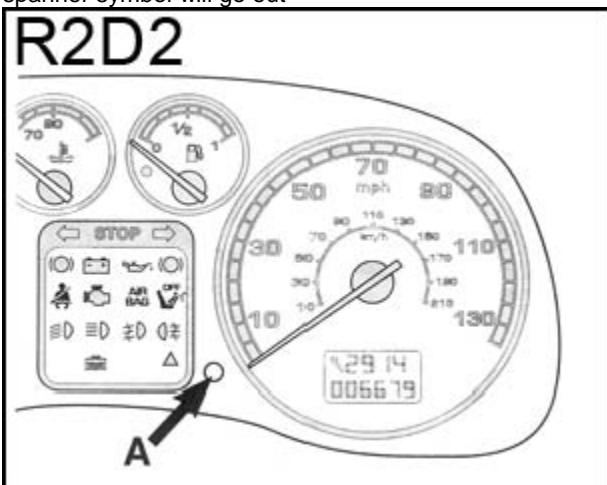
306 1996---

Switch ignition off Press and hold button A fig R12 Switch ignition on Keep button A depressed for 10 sec Display will now read 0 & spanner symbol will go out



307 2001---

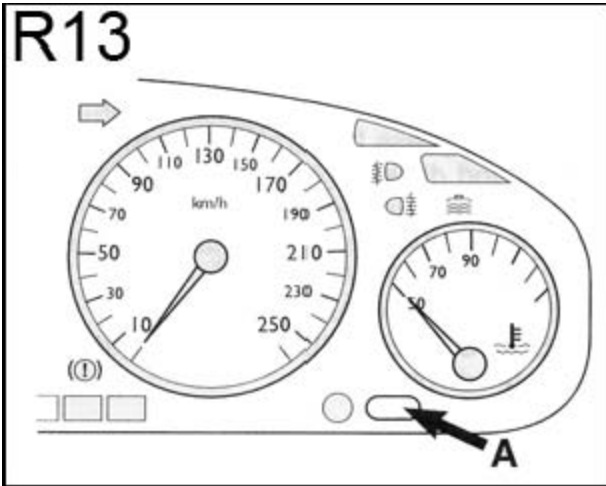
Switch ignition off Press and hold button A fig R2D2 Switch ignition on Keep button A depressed for 10 sec Display will now read 0 & spanner symbol will go out



406 1998---

Switch ignition off Press and hold button A fig R13 Switch ignition on Keep button A depressed for 10 sec Display will now read 0 & spanner symbol will go out

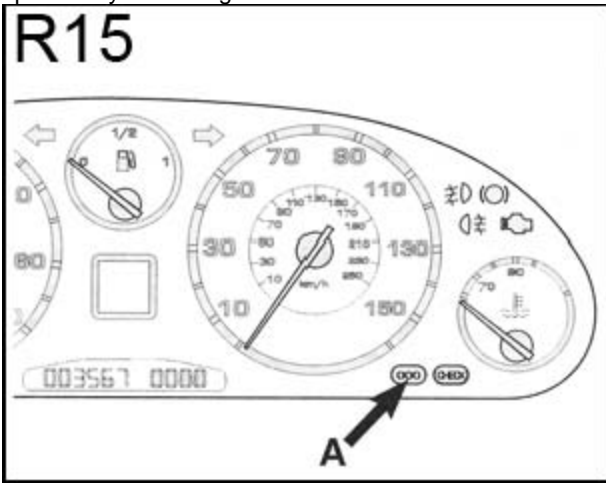
R13



607 2000---->

Switch ignition off Press and hold button A fig R15 Switch ignition on Keep button A depressed for 10 sec Display will now read 0 & spanner symbol will go out

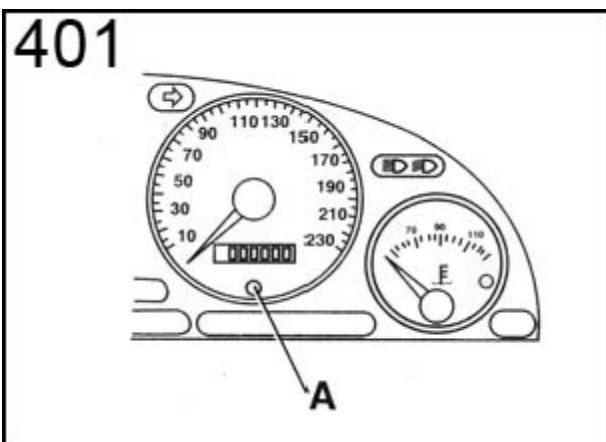
R15



806 1999----> Expert 1999---->

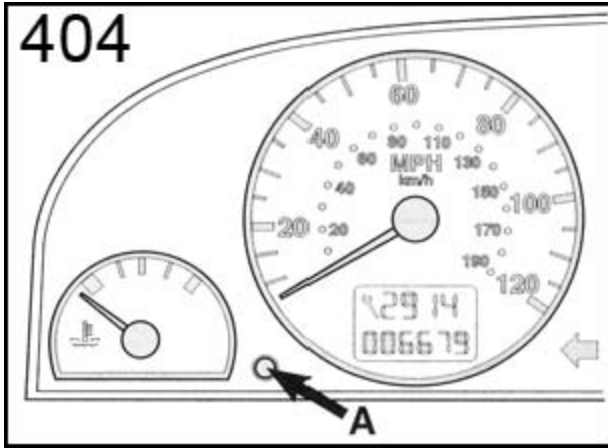
Switch ignition off Press and hold button A fig 401 Switch ignition on Keep button A depressed for 10 sec Display will now read 0 & spanner symbol will go out

401



Partner 1999---->

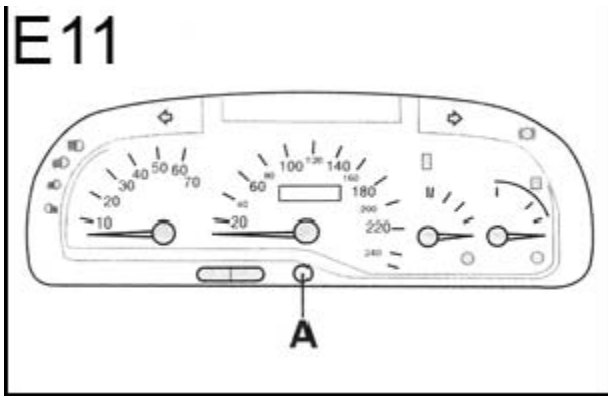
Switch ignition off Press and hold button A fig 404 Switch ignition on Keep button A depressed for 10 sec Display will now read 0 & spanner symbol will go out



Renault

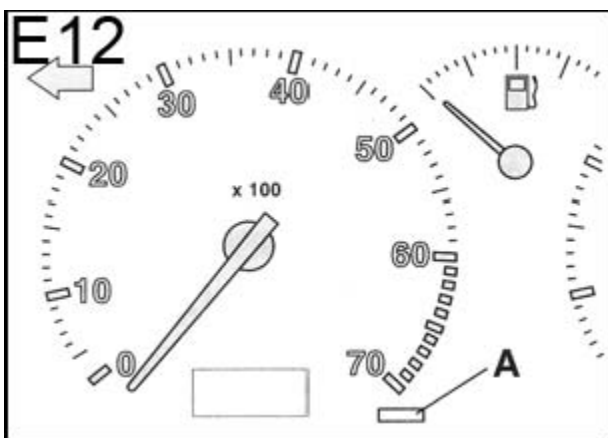
Laguna (models with trip computer) 1994-98

Switch ignition on Press reset button A fig E11 until spanner symbol flashes Keep button depressed until spanner symbol stops flashing and remains illuminated Release button A Switch ignition off



Safrane 1994-01

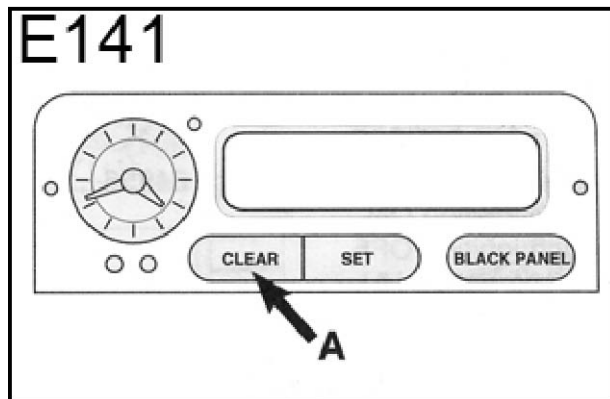
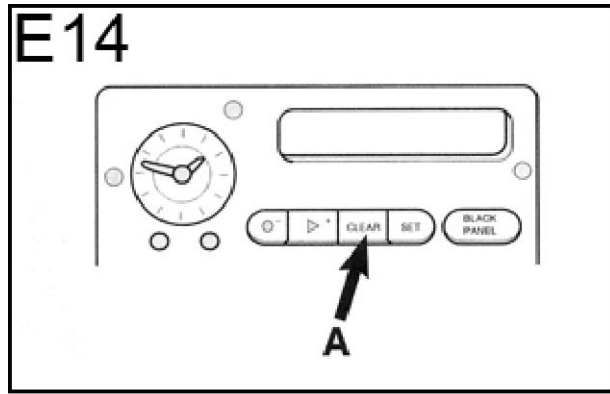
Press reset button A fig E12 Switch ignition on Keep button depressed until spanner symbol stops flashing and remains illuminated Release button A Switch ignition off



Saab

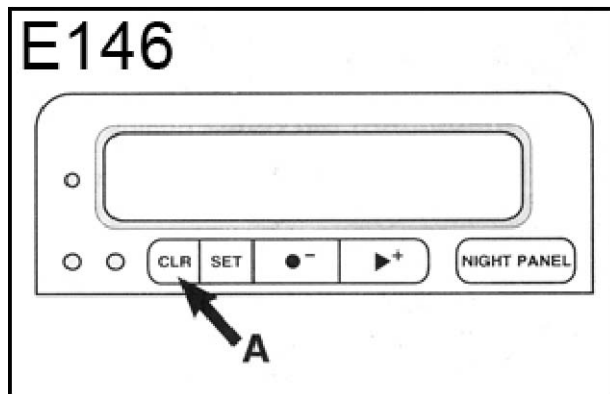
900 1994-98

Switch ignition on Press & hold button A fig E14 or fig E141 for at least 8 sec The word Service will appear in the display accompanied by a beep Switch ignition off



9-3 1998---> 9-5 1997--->

Switch ignition on Press & release button A fig E146 Press & hold button A for at least 8 sec The word Service will appear in the display after 2 beeps Switch ignition off



[Back](#)

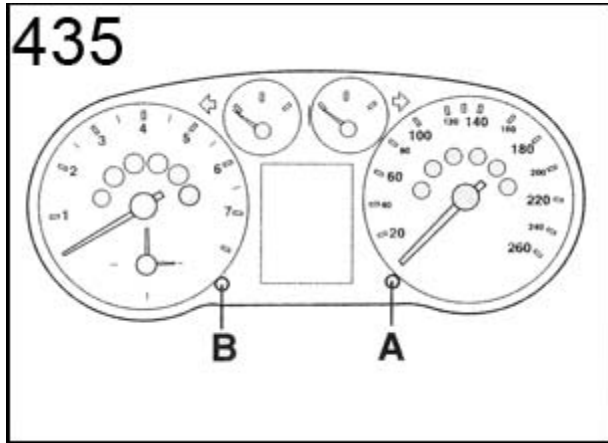
Seat

Arosa 1997-00

Oil - Oil service

Press and hold button A fig 435 Switch ignition on Keep button A depressed until - - - appears in the display Release button A Switch ignition off

INSP - Inspection service Press and hold button A fig 435 Switch ignition on Keep button A depressed until - - - appears in the display Release button A Switch ignition off



Ibiza / Cordoba 1993-99 Inca 1995---

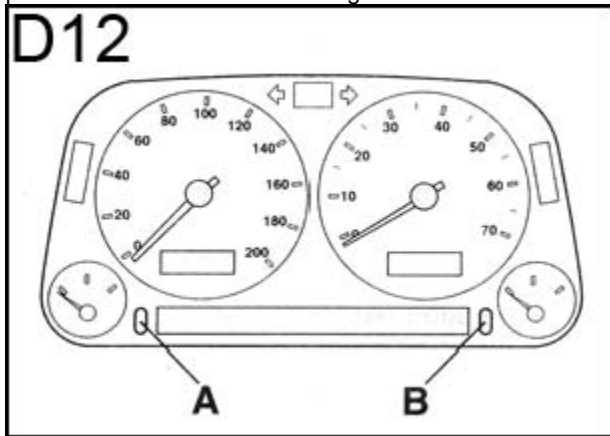
OEL - oil service

Press & hold button A fig D12 Switch ignition on Switch ignition off Release button A The letter OEL will appear Press clock minute button B until - - - - appears Switch ignition ON until the letters IN00 display

IN01 - inspection service

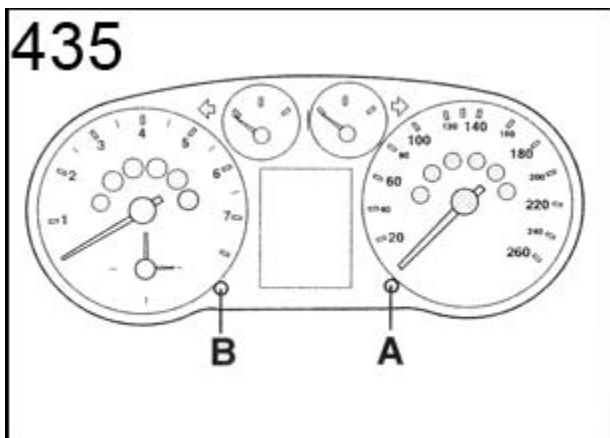
Press & hold button A fig D12 Switch ignition on Switch ignition off Release button A The letter OEL will appear Press button A to display IN01 Press button B to display - - - - Switch ignition ON until the letters IN00 appear

IN02 - inspection service Press & hold button A fig D12 Switch ignition on Switch ignition off Release button A The letter OEL will appear Press clock minute button B until - - - - appear Press button A to display IN01 Press button B to display - - - - Repeat procedure to reset IN02 Switch ignition on until the letters IN00 appear



Ibiza / Cordoba 1999--->Leon 2000--->Toledo 2000---

Press & hold button A fig 435 Switch ignition on Turn button A to right for 1 sec Display will now read clear Release button A Switch ignition off

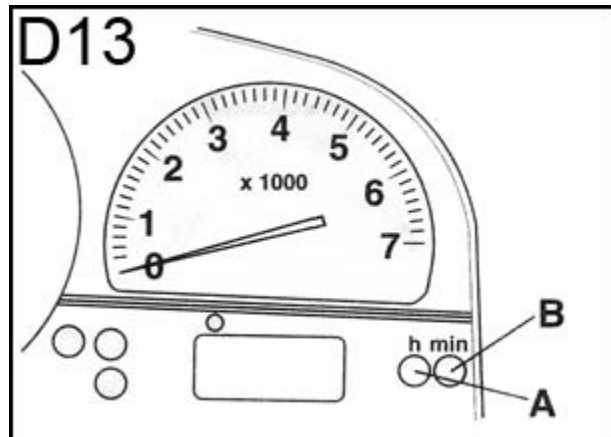


Toledo 1994-99

Oil - Oil service Switch ignition on Press & release clock hour button A fig D13 The letters OEL will appear Press the clock minute button B until - - - appears Switch ignition off

IN01 - inspection service Switch ignition on Press & release clock hour button A fig D13 Press & release clock hour button A again The letters IN01 will appear Press the clock minute button B until - - - appears Clear the OEL indicator as previously described Switch ignition off

IN02 - inspection service Switch ignition on Press & release clock hour button A fig D13 Press & release clock hour button A twice more The letters IN02 will appear Press clock button B until - - - appears Clear the OEL & IN01 indicator as previously described Switch ignition off

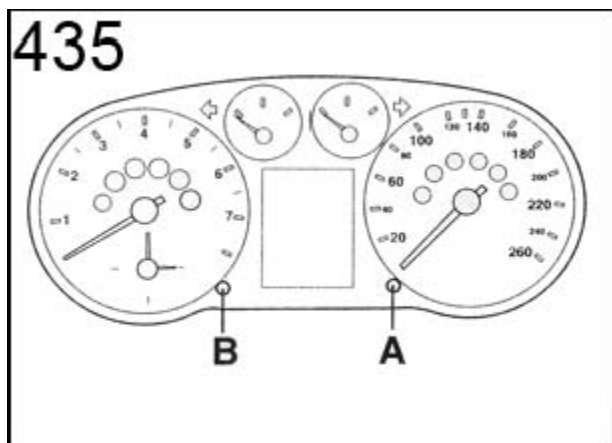


Leon 1999 Toledo 1999

Oil - Oil service

Press & hold button A fig 435 Switch ignition on Release button A The letters OEL or OIL will appear For models with digital clock turn button B to the right until - - - appears For models with analogue clock pull out button B until - - - appears

INSP - inspection service Press & hold button A fig 435 Switch ignition on Release button A Press & release The letters INSP will appear For models with digital clock turn button B to the right until - - - appears For models with analogue clock pull out button B until - - - appears

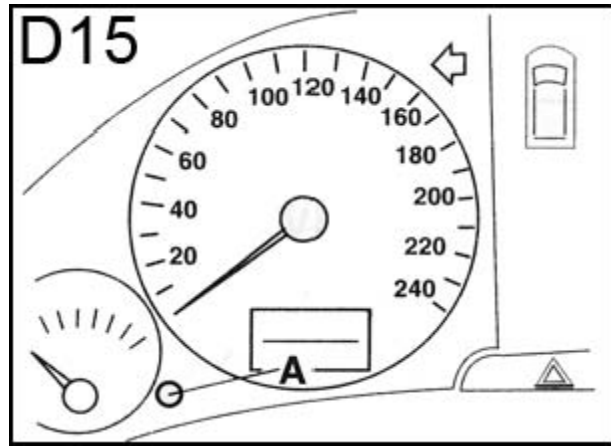


Alhambra 1995-00

OEL - Oil service Press & hold reset button A fig D15 Switch ignition on four - - - will appear Switch ignition off Release button A

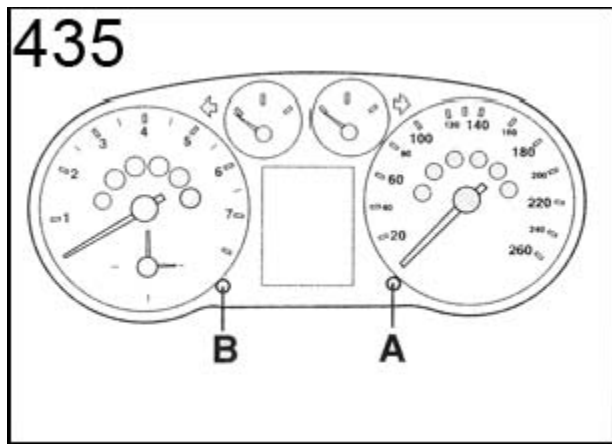
IN01 - inspection service Press & hold reset button A fig D15 Switch ignition on four - - - will appear Switch ignition off Release button A Clear the OEL indicator as previously described

IN02 - inspection service Press & hold reset button A fig D15 Switch ignition on four - - - will appear Switch ignition off Release button A Clear the OEL & IN01 indicator as previously described



Alhambra 2000--->

Vehicles on longlife service cannot be reset Fixed service interval reset as follows Press & hold button A fig 435 Switch ignition on The word service will appear Release button A Turn button B to the right to reset the display Switch ignition off

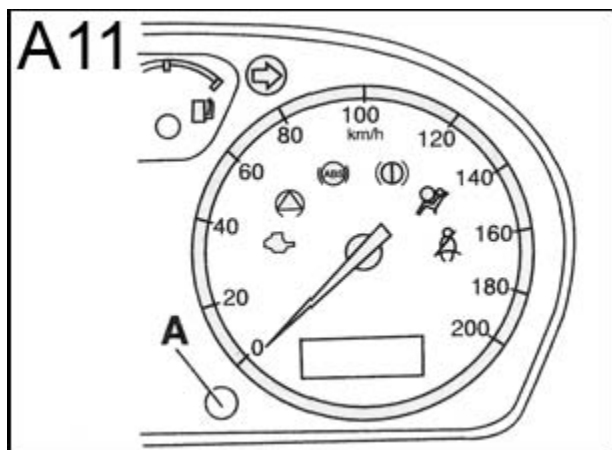


Skoda

Fabia 1999--->

Press & hold button A fig A11 Switch ignition on Release button A as soon as the letters OIL appear Turn button A to the right until the letters are erased & replaced by - - - - Switch ignition off

INSP - inspection service Press & hold button A fig A11 Switch ignition on Release button A as soon as the letters OIL appears Press & hold button A Release button A as soon as the letters INSP appears Turn button A to the right until the letters are erased & replaced by - - - -

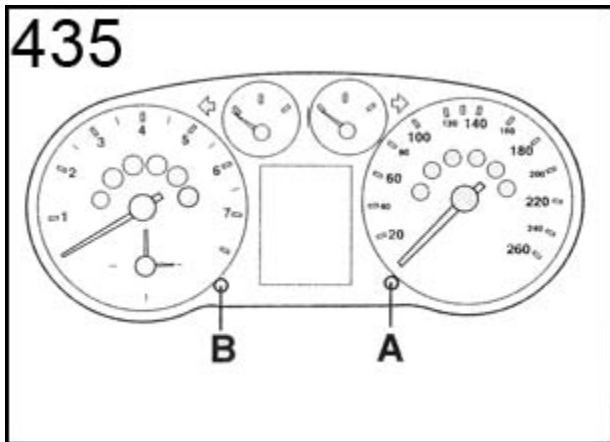


Octavia 1997-00 OIL- oil service

Press & hold button A fig 435 Switch ignition on The letters OIL will appear in the display Release button A Turn button A to the

right until the letters are erased & replaced by - - - -

INSP- inspection service Press & hold button A fig 435 Switch ignition on The letters OIL will appear in the display Release button A Press & release button A The letters INSP will appear in the display Turn button B to the right until the letters are erased & replaced by - - - -



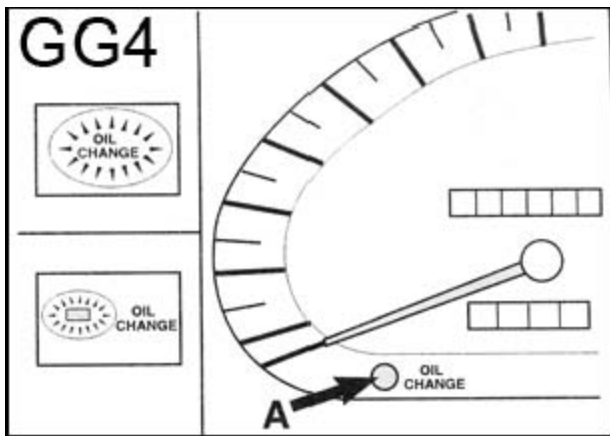
Octavia 2000--->Vehicles with longlife service cannot be reset

Fixed interval servicing as follows Press & hold button A fig 435 Switch ignition on Thw word service will appear Release button A Turn button B to the right to reset the display Switch ignition off

Toyota

Previa 1990-00

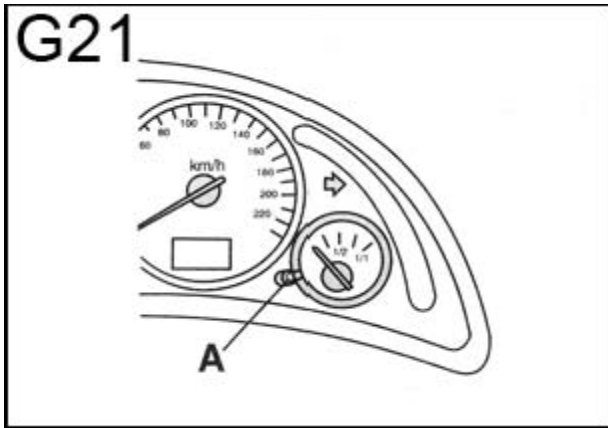
Oil warning Lamp Remove grommet from instrument panel fig GG4 Using suitable tool press button A



Vauxhall

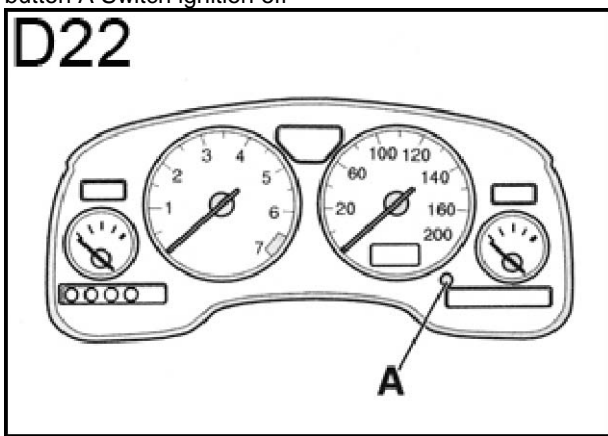
Corsa-C

Press & hold button A fig G21 Switch ignition on The display will flash for 2 sec Keep button A depressed until - - - - appears Release button A Switch ignition off



Astra-G Zafira

Press & hold button A fig D22 Switch ignition on The letters INSP will appear Keep button A depressed until - - - appears Release button A Switch ignition off



Unknown Vauxhall 1999 onwards

Turn Ignition Off Hold Trip Reset In Turn Ignition On Still Holding Trip Reset wait for three dashes Turn off Ignition Turn on Ignition to confirm

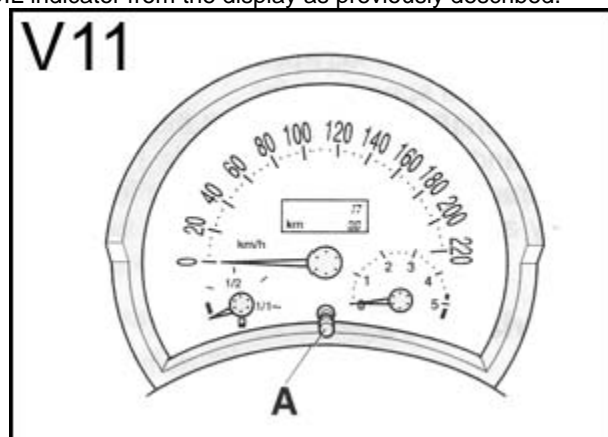
[Back](#)

Volkswagen

Beetle 1998-99

OEL - Oil service Press and hold button A Fig.V11Switch ignition on. The letters OEL or OIL will appear. Release button A Press and release. A The letters INSP will appear in the display. Press and hold button A until - - - appears in the display. Release button A.

INSP - Inspection service. Press and hold button A.Fig V11Switch ignition on. The letters INSP will appear in the display .Release button A Press and release. A The letters OEL or OIL will appear. Press and hold button A until - - - appears in the display. Release button A. If required clear the OEL/OIL indicator from the display as previously described.



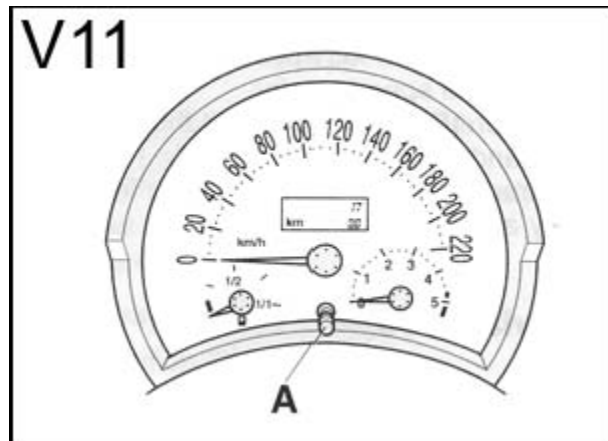
Beetle 1999-00

Press and hold button A Fig.V11 Switch ignition on.. Release button A The letters Service will appear in the display. Press and hold button A until the word SERVICE is erased Switch ignition OFF

Beetle 2000 ->

Vehicles on fixed interval servicing can be reset as follows.

Press and hold button A Fig.V11 Switch ignition on.. Release button A The letters Service will appear in the display. Press and hold button A until the word SERVICE is erased Switch ignition OFF

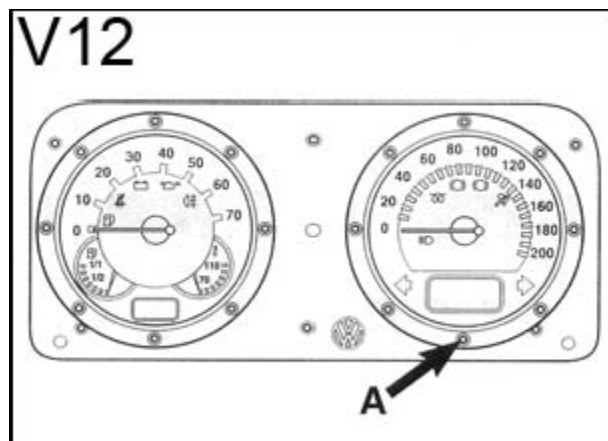


Lupo 1998 -->Polo 1999 --> Polo Classic/Estate 1999 -->

OIL - Oil service Press and Hold button A Fig V12Switch ignition ON. Keep button A depressed until - - - appears in the display. Release button A. SWitch ignition off.

INSP - inspection service.

Press and Hold button A Fig V12Switch ignition ON. Keep button A depressed until - - - appears in the display. Release button A. SWitch ignition off. If required clear the OIL indicator as previously described.



Polo (excluding 1.9D AEF engine) 1994 - 1997. Polo Classic/Estate (excluding 1.9D 1Y engine)1996 - 1999. Golf / Vento / Cabrio (excluding 1.9D 1Y engine 1996 -->)1991 --> Caddy (excluding 1.9D 1Y engine) 1996 --->

OEL - Oil service.

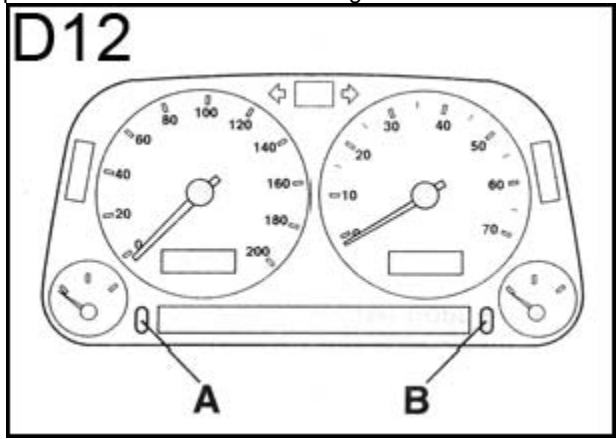
Switch ignition ON. Press and hold button A. Fig D12. Switch ignition off. Release button A. The letters OEL will appear. Press the clock minute button B until -----appears in the display. Switch ignition ON until the letters IN00 appear in the display.

IN01 - Inspection service.

Switch ignition ON. Press and hold button A. Fig D12. Switch ignition off. Release button A. Press and release button A The letters IN01 will appear. Press the clock minute button B until -----appears in the display. Press button A to display OEL. Press button B to display -----Switch ignition ON until the letters IN00 appear in the display.

IN02 - Inspection service.

Switch ignition ON. Press and hold button A. Fig D12. Switch ignition OFF. Release button A. Press and release button A The letters IN02 will appear. Press the clock minute button B until -----appears in the display. Press button A to display IN01 Press button B to display -----Repeat the procedure .to reset OEL Switch ignition ON until the letters IN00 appear in the display.



POLO 1.9D (AEF engine) 1995 - 97 POLO Classic/Estate (1Y engine) 1996 - 99. Golf / Vento 1.9D (1Y engine) 1996 - 99 Caddy 1.9D (1Y engine) 1996 ---->

OEL - Oil service.

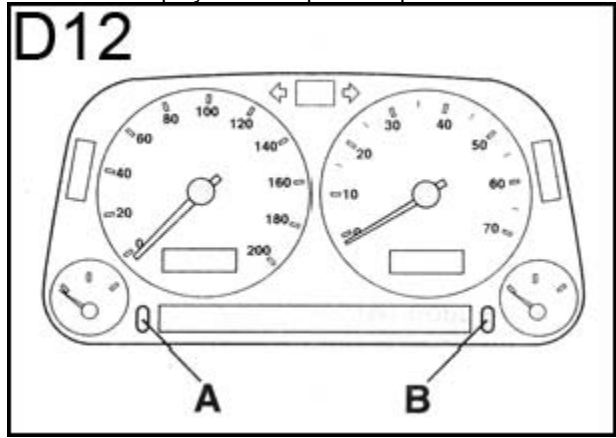
Switch ignition ON. Press and hold button A. Fig D12. Switch ignition off. Release button A. The letters OEL will appear. Press the clock minute button B until -----appears in the display. Switch ignition ON until the letters INSP-0 appear in the display.

INSP-1 - Inspection service.

Switch ignition ON. Press and hold button A. Fig D12. Switch ignition off. Release button A. Press and release button A The letters INSP-1 will appear. Press the clock minute button B until -----appears in the display. Press button A to display OEL. Press button B to display -----Switch ignition ON until the letters INSP-0 appear in the display.

INSP-2 - Inspection service.

Switch ignition ON. Press and hold button A. Fig D12. Switch ignition OFF. Release button A. Press and release button A The letters INSP-2 will appear. Press the clock minute button B until -----appears in the display. Press button A to display INSP-1 Press button B to display -----Repeat the procedure .to reset OEL Switch ignition ON until the letters INSP-0 appear in the display.



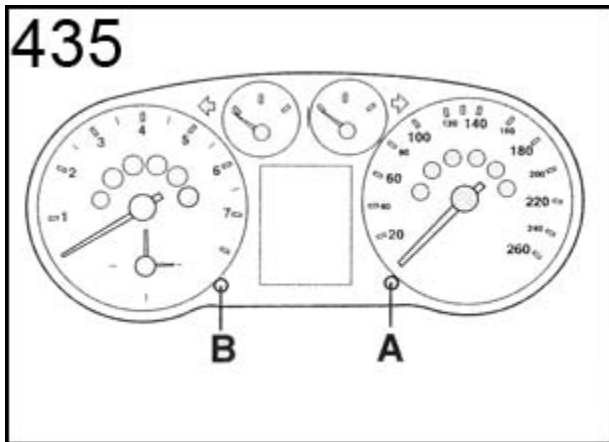
Polo 1998-99

OIL- Oil service.

Press and hold button A Fig 435. Switch ignition ON. Keep button A depressed until ----appears in the display. Release button A. Switch ignition OFF.

INSP - Inspection service.

Press and hold button A. Switch ignition ON. Keep button A depressed until -----Appears. Release button A. Switch ignition OFF. If required clear the OIL indicator by following the previous instructions



Golf / Bora 1997-99

OIL - Oil service.

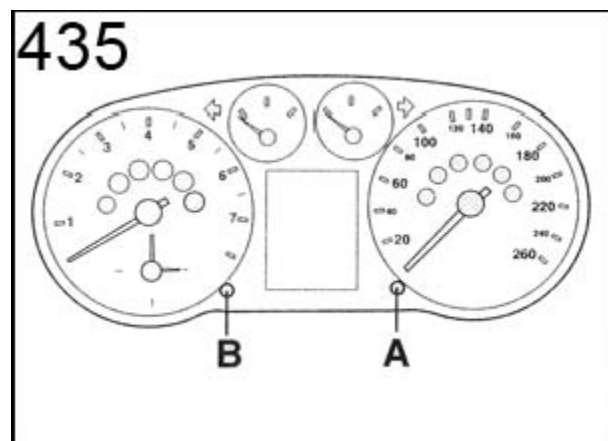
Press and hold button A fig 435 Switch ignition ON. The letters OIL will appear. Release button A. Turn button B to the RIGHT until ----- appears.

INSP - Inspection Service.

Press and hold button A fig 435 Switch ignition ON. The letters OIL will appear. Release button A. Press and release button A. The letters INSP will appear. Turn button B to the RIGHT until ----- appears. If required clear the OIL indicator as previously described.

Golf / Borra 1999-00 Passat 1999 - 00

Press and hold button A fig 435 Switch ignition ON. The word SERVICE will appear. Release button A. Turn button B to the RIGHT to reset the display.



Golf / Borra 2000 ----> Passat 2000 ----> Sharan 2000 ---->

Vehicles on fixed interval servicing can be reset as follows.

Press and hold button A FIG 435 Switch ignition ON. The word SERVICE will appear. Release button A. Turn button B to the RIGHT to reset the display. Switch the ignition OFF.

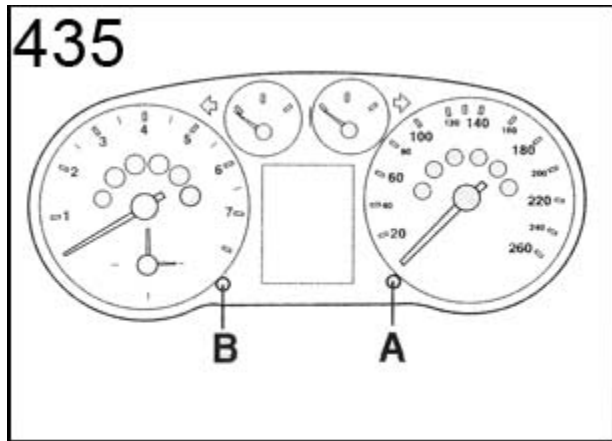
Passat 1996 - 1999.

OEL- Oil services.

Press and hold button A FIG 435 Switch ignition ON. Release button A. The word OEL will appear. For models with digital clock Turn button B to the RIGHT until ---- appears in the display. For models with analogue clocks pull out button B until ---- appears in the display.

INSP - Inspection service.

Press and hold button A FIG 435 Switch ignition ON. Release button A. Press and release button A. The word INSP will appear In the trip recorder.
 For models with digital clock Turn button B to the RIGHT until ---- appears in the display. For models with analogue clocks pull out button B until ---- appears in the display. If required clear the OEL or OIL indicator from the display as previously described.



Sharan.(Models with trip computer) 1995 - 00

OEL - Oil service.

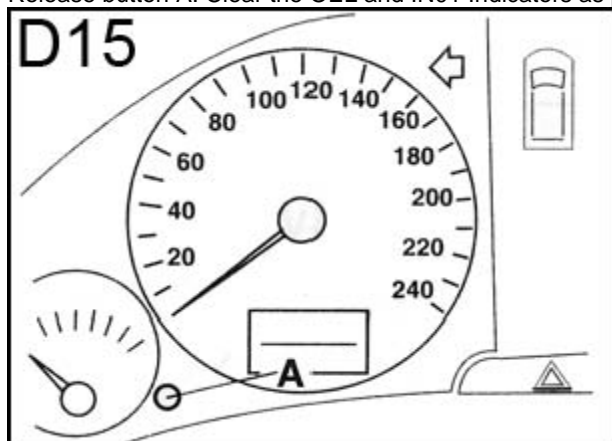
Press and hold reset button A FIG D15 Switch ignition ON. Four dashes will appear in the display like this ---- Switch ignition OFF. Release button A.

IN01 - Inspection service.

Press and hold reset button A FIG D15 Switch ignition ON. Four dashes will appear in the display like this ---- Switch ignition OFF. Release button A. Clear the OEL Indicator as previously described.

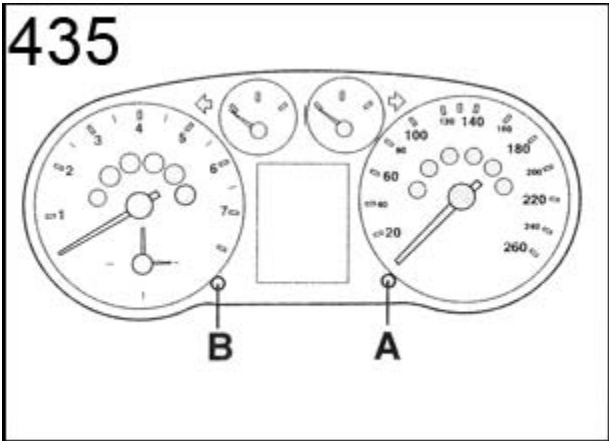
IN02 - Inspection service.

Press and hold reset button A FIG D15 Switch ignition ON. Four dashes will appear in the display like this ---- Switch ignition OFF. Release button A. Clear the OEL and IN01 Indicators as previously described.



Sharan (models with adjustment button for trip recorder on dash panel) 1995 - 00

Press and hold button A FIG 435 Switch ignition ON. The word SERVICE will appear. Release button A. Turn button B to the RIGHT until the word service is erased. Switch the ignition OFF.



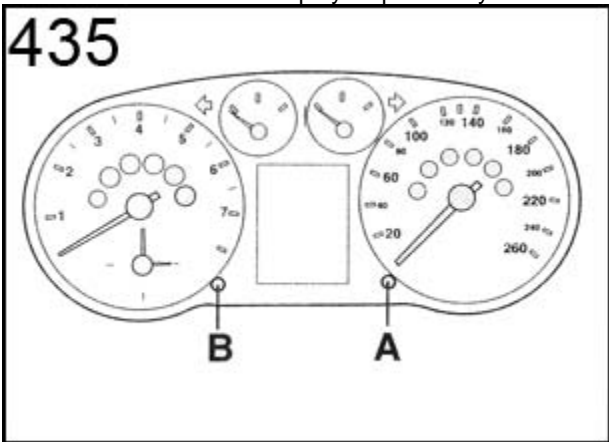
Transporter. ---> 04.1999

OEL- Oil services.

Press and hold button A FIG 435 Switch ignition ON. Release button A. The word OEL or OIL will appear. Turn button B to the RIGHT until ---- appears in the display.

INSP- Inspection service.

Press and hold button A FIG 435 Switch ignition ON. Release button A. Press and release button A. The word INSP will appear In the trip recorder. For models with digital clock Turn button B to the RIGHT until ---- appears in the display. If required clear the OEL or OIL indicator from the display as previously described



Transporter TDI 05.99 -----> Transporter V6 24V 2000 ----->

Vehicles on fixed interval servicing can be reset as follows.

Press and hold button A FIG 435 Switch ignition ON. The word SERVICE will appear. Release button A. Turn button B to the RIGHT to reset the display. Switch the ignition OFF.

Volvo

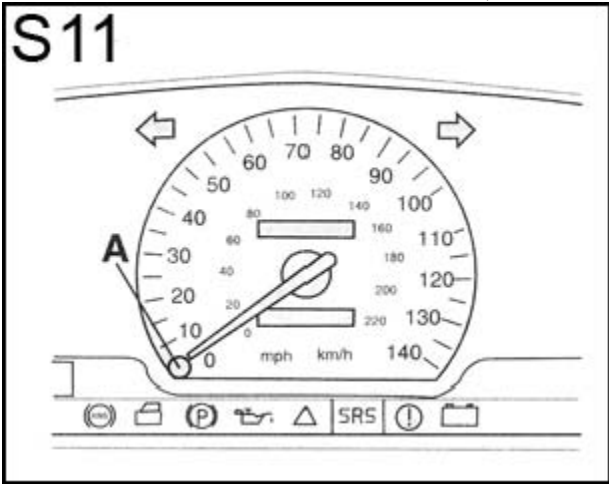
S40 / V40 1999

Switch ignition on Press and hold reset button A fig S11 Keep button depressed for 12 sec Service interval indicator will flash Release reset button A within 4 sec A audible signal when reset

S40 / V40 2000--->

Switch ignition off Press and hold reset button A fig S11 Switch ignition on Keep button depressed for 10 sec Service interval indicator will flash Release reset button A within 4 sec A audible signal when reset

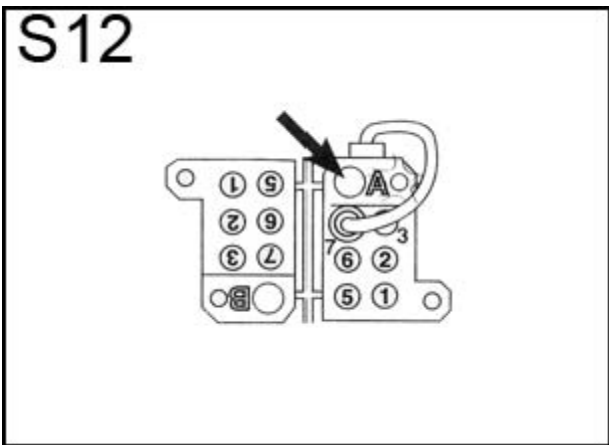
Note: If reset button not released within 4 sec, the service interval indicator will not be reset but will stop flashing



850 (odometer below speedometer needle) 1991-95

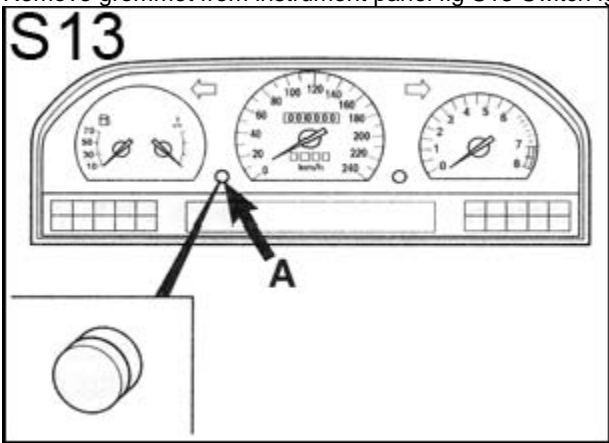
Switch ignition on Connect fly lead to terminal 7 on diagnostic socket fig S12, diagnostic socket is located behind righthand headlight Select check function 4 by pressing button A 4 times System is ready to accept reset code once LED is illuminated

Resetting code 1-5-1 Press button A once When LED illuminates press button A 5 times When LED illuminates press button A once LED should repeat flashing to show code accepted



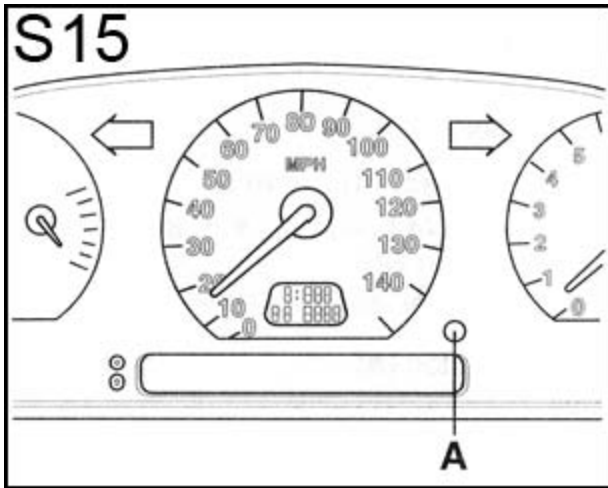
850 (odometer above speedometer needle)

Remove grommet from instrument panel fig S13 Switch ignition on using suitable tool press button A Switch ignition off



S70 / V70 1997-00C70 1998--->

Switch ignition off Press & hold button A for trip meter fig S15 Switch ignition on Keep button depressed for 10 sec Service indicator will flash Release button within 4 sec

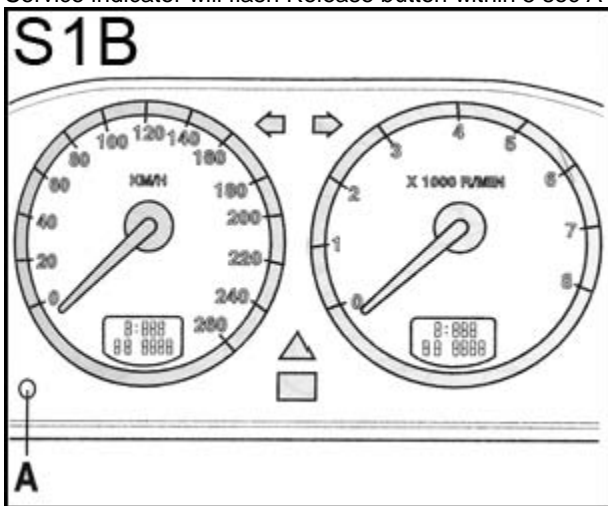


S60 2000---> V70 2000--->

Turn ignition key to position 1 Press & hold button A for trip meter fig S1B Switch ignition on Keep button depressed for 10 sec Service indicator will flash Release button within 5 sec A audible signal when reset

S80 1998--->

Turn ignition key to position 1 Press & hold button A for trip meter fig S1B Switch ignition on Keep button depressed for 10 sec Service indicator will flash Release button within 5 sec A audible signal when reset



240 1986-93

When the "SERVICE" is illuminated, reach behind the instrument panel and push the level located between the tachometer and speedometer.

740,780 1986-88, 1988-90

When the "SERVICE" light is illuminated, reach behind the instrument panel and press the button located to the right of the speedometer

**740,
760,
940,
960 1989-92,1986-90,1991-97**

When the "SERVICE" light is illuminated, remove the cap on the face of the instrument panel between the clock and the speedometer. Insert a thin-bladed tool into the cavity and press the reset button